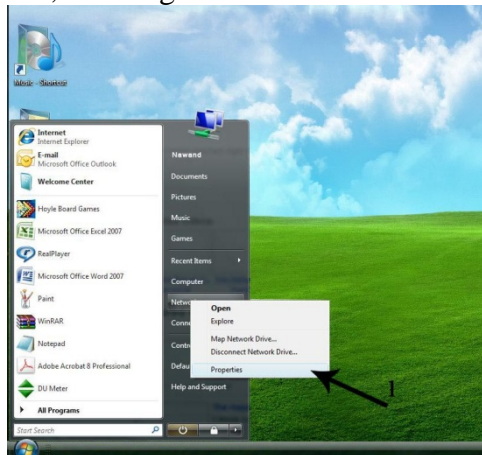
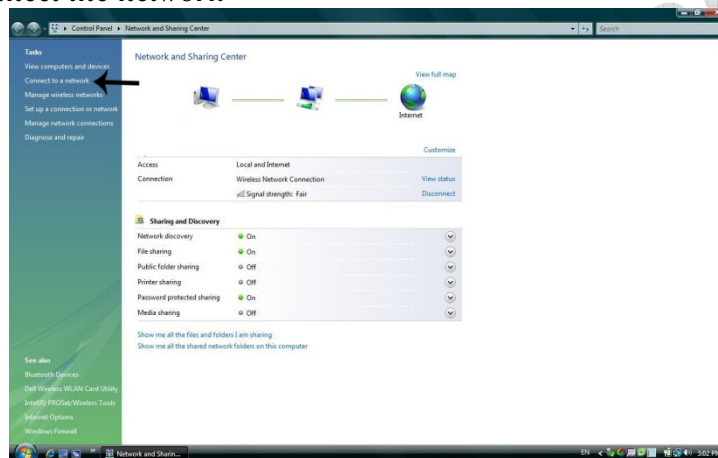


Windows Vista

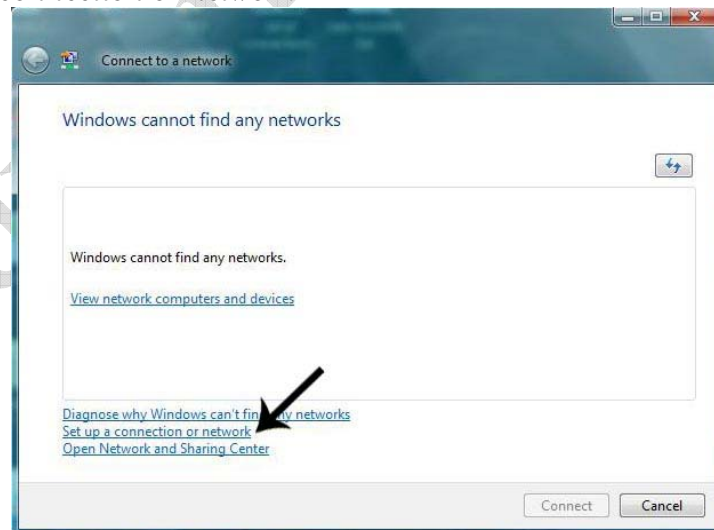
- 1- Select the **Start** button , then Right click on **Network** and select **properties**



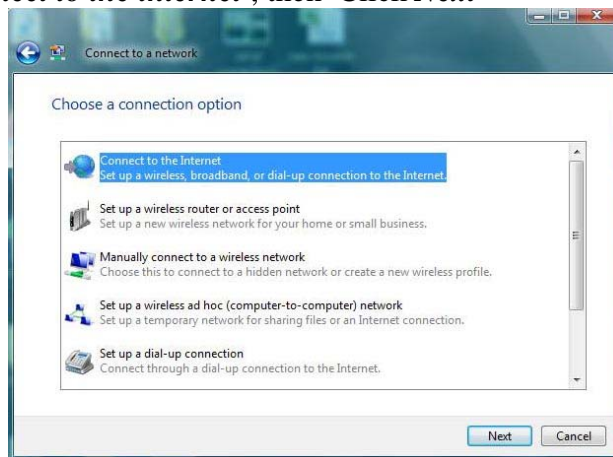
- 2- Click **Connect the network**



- 3- Click **set up a connection or network**



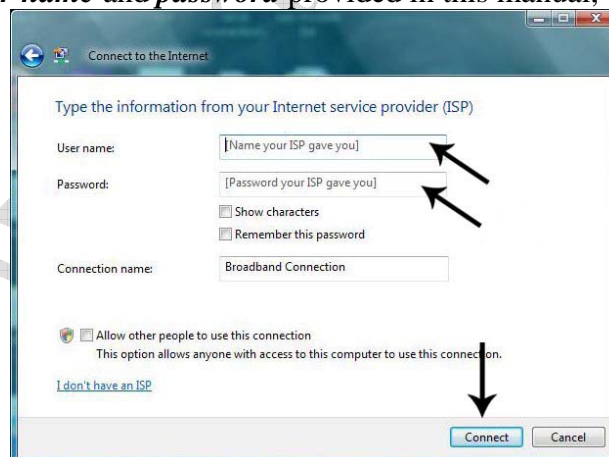
- 3- Click on **Connect to the internet** , then Click **Next**



- 4- Click on **Broadband (PPPoE)**



- 5- Enter the temp **user name** and **password** provided in this manual, then click connect



For Technical Support & any Information Kindly Contact:

☎ : 0750 789 1161

066 257 5310

Connect the PPPoE ®
Copyright © 2009 Nawand Telecom Corporation
For more information
info@nawand.net
www.nawand.net

Nawand Telecom