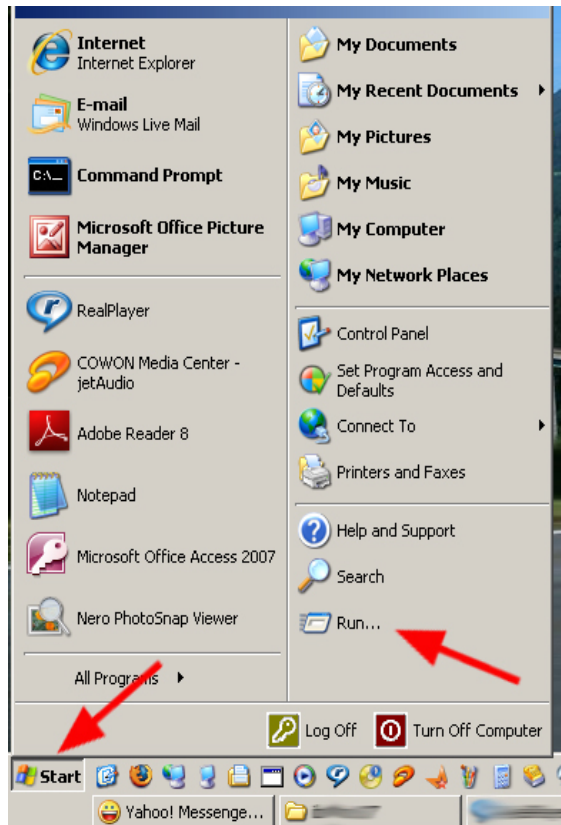
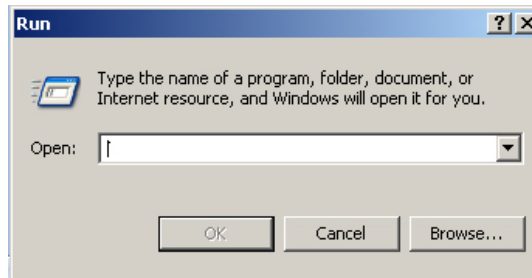


- 1- Select the **Start** button, and then click on **(Run)**.



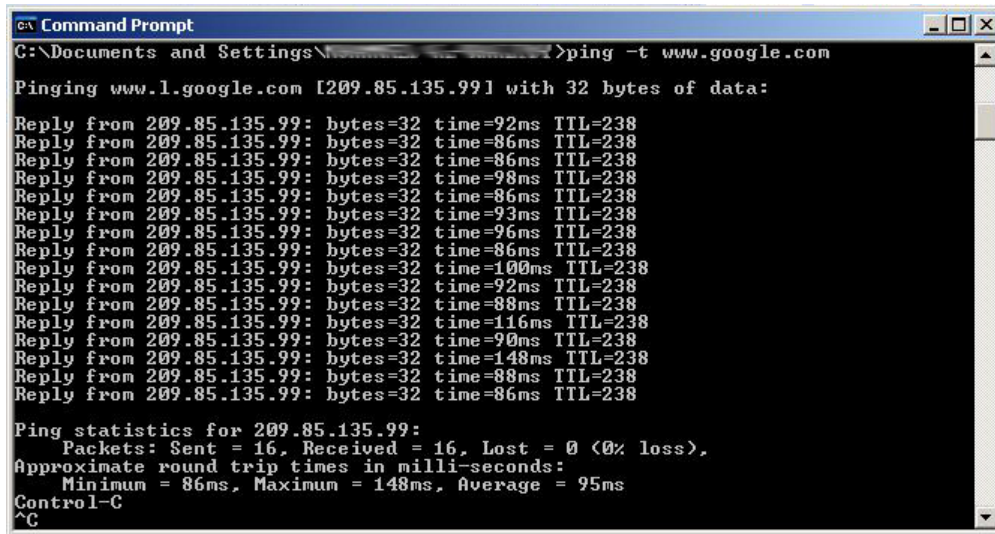
- 2- Write **(cmd)** then click **OK**.



- 3- Write the following command: **(ping -t 4.2.2.2)** then press enter.
If you see reply that's mean you have internet .

```
ex Command Prompt
Microsoft Windows XP [Version 5.1.2600]
(C) Copyright 1985-2001 Microsoft Corp.
C:\Documents and Settings\...>ping -t 4.2.2.2
Pinging 4.2.2.2 with 32 bytes of data:
Reply from 4.2.2.2: bytes=32 time=117ms TTL=242
Reply from 4.2.2.2: bytes=32 time=109ms TTL=242
Reply from 4.2.2.2: bytes=32 time=108ms TTL=242
Reply from 4.2.2.2: bytes=32 time=104ms TTL=242
Reply from 4.2.2.2: bytes=32 time=110ms TTL=242
Reply from 4.2.2.2: bytes=32 time=107ms TTL=242
Reply from 4.2.2.2: bytes=32 time=116ms TTL=242
Reply from 4.2.2.2: bytes=32 time=123ms TTL=242
Reply from 4.2.2.2: bytes=32 time=112ms TTL=242
Reply from 4.2.2.2: bytes=32 time=131ms TTL=242
Ping statistics for 4.2.2.2:
    Packets: Sent = 10, Received = 10, Lost = 0 (0% loss),
    Approximate round trip times in milli-seconds:
        Minimum = 104ms, Maximum = 131ms, Average = 113ms
Control-C
^C
C:\Documents and Settings\...>
```

- 4- Or you can use website instead IP , for example (**ping -t www.google.com**)



```
CA Command Prompt
C:\Documents and Settings\...>ping -t www.google.com
Pinging www.l.google.com [209.85.135.99] with 32 bytes of data:
Reply from 209.85.135.99: bytes=32 time=92ms TTL=238
Reply from 209.85.135.99: bytes=32 time=86ms TTL=238
Reply from 209.85.135.99: bytes=32 time=86ms TTL=238
Reply from 209.85.135.99: bytes=32 time=98ms TTL=238
Reply from 209.85.135.99: bytes=32 time=86ms TTL=238
Reply from 209.85.135.99: bytes=32 time=93ms TTL=238
Reply from 209.85.135.99: bytes=32 time=96ms TTL=238
Reply from 209.85.135.99: bytes=32 time=86ms TTL=238
Reply from 209.85.135.99: bytes=32 time=100ms TTL=238
Reply from 209.85.135.99: bytes=32 time=92ms TTL=238
Reply from 209.85.135.99: bytes=32 time=88ms TTL=238
Reply from 209.85.135.99: bytes=32 time=116ms TTL=238
Reply from 209.85.135.99: bytes=32 time=90ms TTL=238
Reply from 209.85.135.99: bytes=32 time=148ms TTL=238
Reply from 209.85.135.99: bytes=32 time=88ms TTL=238
Reply from 209.85.135.99: bytes=32 time=86ms TTL=238
Ping statistics for 209.85.135.99:
    Packets: Sent = 16, Received = 16, Lost = 0 (0% loss),
    Approximate round trip times in milli-seconds:
        Minimum = 86ms, Maximum = 148ms, Average = 95ms
Control-C
^C
```

For Technical Support :

Tel: 0750 789 1161

066 257 5310

Connect the PPPoE ®
Copyright © 2009 Nawand Telecom Corporation
For more information :

info@nawand.net
www.nawand.net